

LEASEHOLD



Flat (EPC Rating: C)

21, SEVEN ACRE HOUSE QUEENSMEAD
ROAD, HIGH WYCOMBE,
Guide Price

£275,000

Rye
View
HOMES



2 Bedroom Flat located in High Wycombe

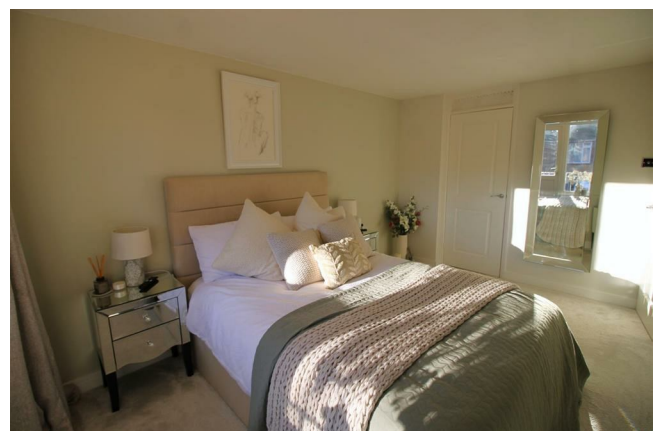
RyeView Homes are pleased to present to the market this spacious two bedroom first floor flat, located in the East of High Wycombe, in the sought after area of Loudwater.

This bright and spacious flat is situated in the East of High Wycombe, providing easy access to local amenities and transport links. The property comprises in brief: entrance hall, spacious lounge with access to private balcony, good sized fitted kitchen, master bedroom with access to the private balcony, a good sized second bedroom and bathroom with separate WC.

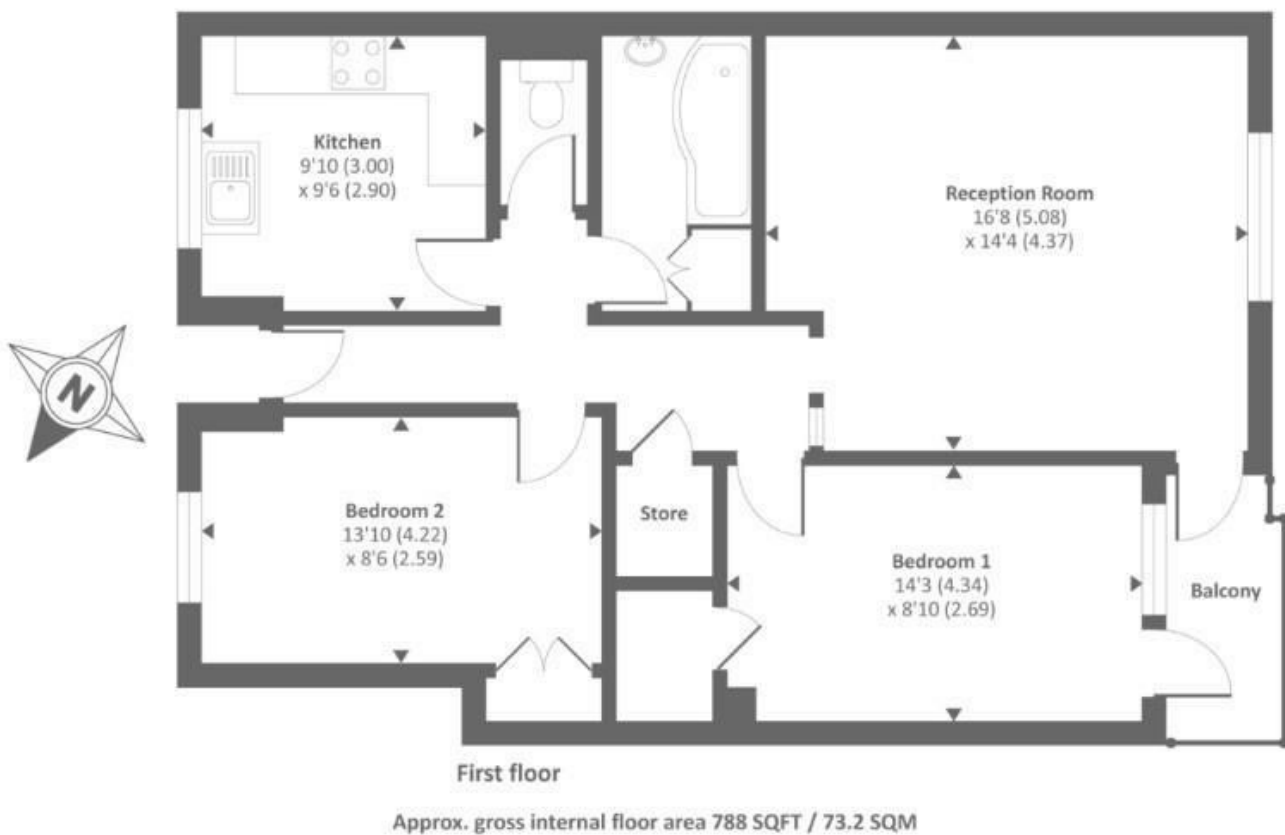
The property further benefits from: garage, UPVC double glazing, and underfloor heating in the kitchen and lounge.

Ideal first time purchase or buy to let investment.

The accommodation in further detail comprises:



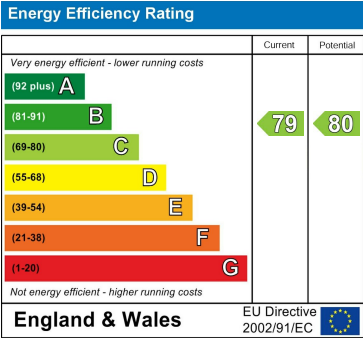
RYEVIEW HOMES | 7 CRENDON STREET, HIGH WYCOMBE, BUCKINGHAMSHIRE, HP13 6LE



Council Tax Band

B

Energy Performance Graph



Call us on

01494 510099

info@ryeviewhomes.com

ryeviewhomes.com

Agents Note: Whilst every care has been taken to prepare these particulars, they are for guidance purposes only. All measurements are approximate and are for general guidance purposes only and whilst every care has been taken to ensure their accuracy, they should not be relied upon and potential buyers are advised to recheck the measurements.